



# RGS7 Polyclonal Antibody

<b>Catalog No</b>	YP-Ab-04125
<b>Isotype</b>	IgG
<b>Reactivity</b>	Human;Mouse;Rat
<b>Applications</b>	WB;ELISA;IHC
<b>Gene Name</b>	RGS7
<b>Protein Name</b>	Regulator of G-protein signaling 7
<b>Immunogen</b>	The antiserum was produced against synthesized peptide derived from human RGS7. AA range:155-204
<b>Specificity</b>	RGS7 Polyclonal Antibody detects endogenous levels of RGS7 protein.
<b>Formulation</b>	Liquid in PBS containing 50% glycerol, 0.5% BSA and 0.02% sodium azide.
<b>Source</b>	Polyclonal, Rabbit,IgG
<b>Purification</b>	The antibody was affinity-purified from rabbit antiserum by affinity-chromatography using epitope-specific immunogen.
<b>Dilution</b>	WB 1:500-2000;IHC-p 1:50-300; ELISA 2000-20000
<b>Concentration</b>	1 mg/ml
<b>Purity</b>	≥90%
<b>Storage Stability</b>	-20°C/1 year
<b>Synonyms</b>	RGS7; Regulator of G-protein signaling 7; RGS7
<b>Observed Band</b>	65kD
<b>Cell Pathway</b>	Cytoplasm, cytosol . Cytoplasm . Cell membrane . Membrane ; Peripheral membrane protein ; Cytoplasmic side . Interaction with PKD1 promotes location at the cell membrane (PubMed:10339594). Interaction with RGS7BP promotes location at the cell membrane (PubMed:15897264). .
<b>Tissue Specificity</b>	Brain,
<b>Function</b>	function:Inhibits signal transduction by increasing the GTPase activity of G protein alpha subunits thereby driving them into their inactive GDP-bound form. Activity on G(o)-alpha is specifically enhanced by the RGS6/GNG5 dimer. May play a role in synaptic vesicle exocytosis. May play important role in the rapid regulation of neuronal excitability and the cellular responses to short-lived stimulations.,PTM:Palmitoylated.,PTM:Phosphorylation and subsequent interaction with 14-3-3 proteins inhibits GAP activity.,similarity:Contains 1 DEP domain.,similarity:Contains 1 G protein gamma domain.,similarity:Contains 1 RGS domain.,subunit:Heterodimer with GNG5. Interacts with RGS7BP, leading to regulate the subcellular location of the heterodimer formed with Gbeta5 (By similarity). Interacts with 14-3-3 protein Tau and SNAP25BP.,



### Background

function:Inhibits signal transduction by increasing the GTPase activity of G protein alpha subunits thereby driving them into their inactive GDP-bound form. Activity on G(o)-alpha is specifically enhanced by the RGS6/GNG5 dimer. May play a role in synaptic vesicle exocytosis. May play important role in the rapid regulation of neuronal excitability and the cellular responses to short-lived stimulations.,PTM:Palmitoylated.,PTM:Phosphorylation and subsequent interaction with 14-3-3 proteins inhibits GAP activity.,similarity:Contains 1 DEP domain.,similarity:Contains 1 G protein gamma domain.,similarity:Contains 1 RGS domain.,subunit:Heterodimer with GNG5. Interacts with RGS7BP, leading to regulate the subcellular location of the heterodimer formed with Gbeta5 (By similarity). Interacts with 14-3-3 protein Tau and SNAP25BP.,

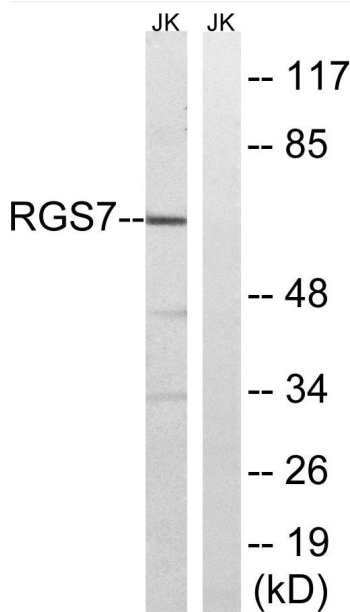
### matters needing attention

Avoid repeated freezing and thawing!

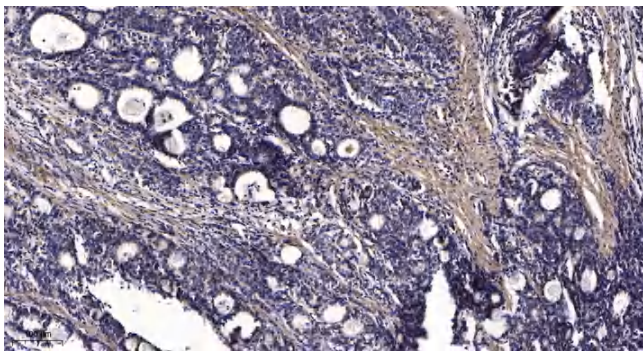
### Usage suggestions

This product can be used in immunological reaction related experiments. For more information, please consult technical personnel.

## Products Images



Western blot analysis of lysates from Jurkat cells, using RGS7 Antibody. The lane on the right is blocked with the synthesized peptide.



Immunohistochemical analysis of paraffin-embedded human Gastric adenocarcinoma. 1, Antibody was diluted at 1:200(4° overnight). 2, Tris-EDTA,pH9.0 was used for antigen retrieval. 3,Secondary antibody was diluted at 1:200(room temperature, 45min).